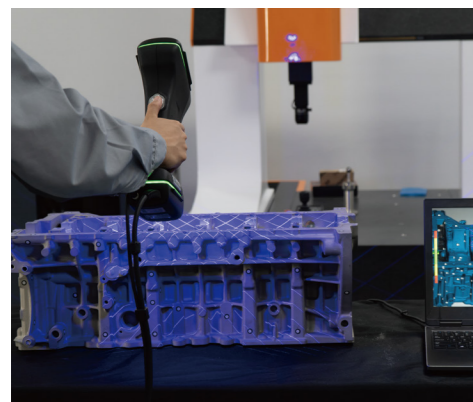


## AXE Technical Parameter

Type		AXE-G7
Laser source	7 red laser crosses (+1 extra red laser)	
Deep hole scanning	Support	
Accuracy	0.020 mm	
Measurement rate	800,000 measurements/s	
Scanning area	550 mm × 500 mm	
Scanning area (photogrammetry)	Standard configuration	Built-in
	Scanning area	2500 mm x 3000 mm
	Depth of field	2500 mm
Laser class	CLASS II (eye-safe)	
Resolution	0.100 mm	
Volume accuracy	Work alone	0.020 mm + 0.035 mm/m
	Work with 1m reference bar	0.020 mm + 0.020 mm/m
	Work with MSCAN-L15	0.020 mm + 0.015 mm/m
Stand-off distance	300 mm	
Depth of field	500 mm	
Output formats	.stl, .ply, .obj, .igs, .wrl, .xyz, .dae, .fbx, .ma, .asc or customized	
Operating temperature range	-10~40°C	
Interface mode	USB 3.0	
Patents	CN204329903U, CN104501740B, CN104165600B, CN204988183U, CN204854633U, CN204944431U, CN204902788U, CN105068384B, CN105049664B, CN204902784U, CN204963812U, CN204902785U, CN204902790U, CN106403845B, CN209197685U, CN209263911U, CN206905709U, CN107202554B, US20200225030A1, US10309770B2, KR102096806B1	



## Company Introduction

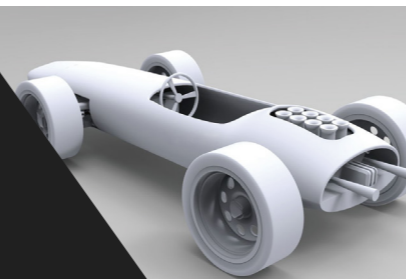
SCANTECH is one of the earliest high-tech companies starting to research and develop handheld 3D visual measurement devices across the world. Leveraging its profound technological prowess, SCANTECH has established strategic partnerships with a number of world-class companies and reached cooperation for joint R&D centers and co-development plans with multiple optical metrology companies in Europe. SCANTECH products are sold to more than 50 countries and regions, serving over 5000 enterprises. The presence of our distributors and international sales and technical support teams has been expanded all across the globe, providing industrial frontier 3D measurement solutions for prominent enterprises and research institutions like Boeing, NASA, COMAC, BMW, Volkswagen, GM, Apple, Huawei, Siemens, JCB and Sany.

SCANTECH has been gaining rapid growth ever since the establishment due to our continuous input in R&D and management, as well as the attraction of top-notch talents. R&D personnel account for 50% of the company staff, among them, the proportion of masters and doctors is as high as 80%. The talent pool enables us to develop a series of proprietary 3D digital measurement systems. Our product line stretches from metrology-grade online and offline equipment and consumer-grade color 3D scanners, which are widely applied in areas of aerospace, automotive/rail transport, mechanical manufacturing, medical care and rehabilitation, digital arts for TV and film, education and research, cultural heritage protection, 3D printing and VR/AR. SCANTECH helps companies fulfill optimized solutions to quality and efficiency and open up a vast territory for 3D digitalization.

## All-Round 3D Digital Solution

ScanTech 3D measurement system offers professional measurement technology for various industries.

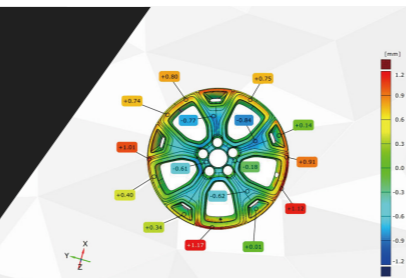
### Rapid Prototyping



### Reverse Engineering



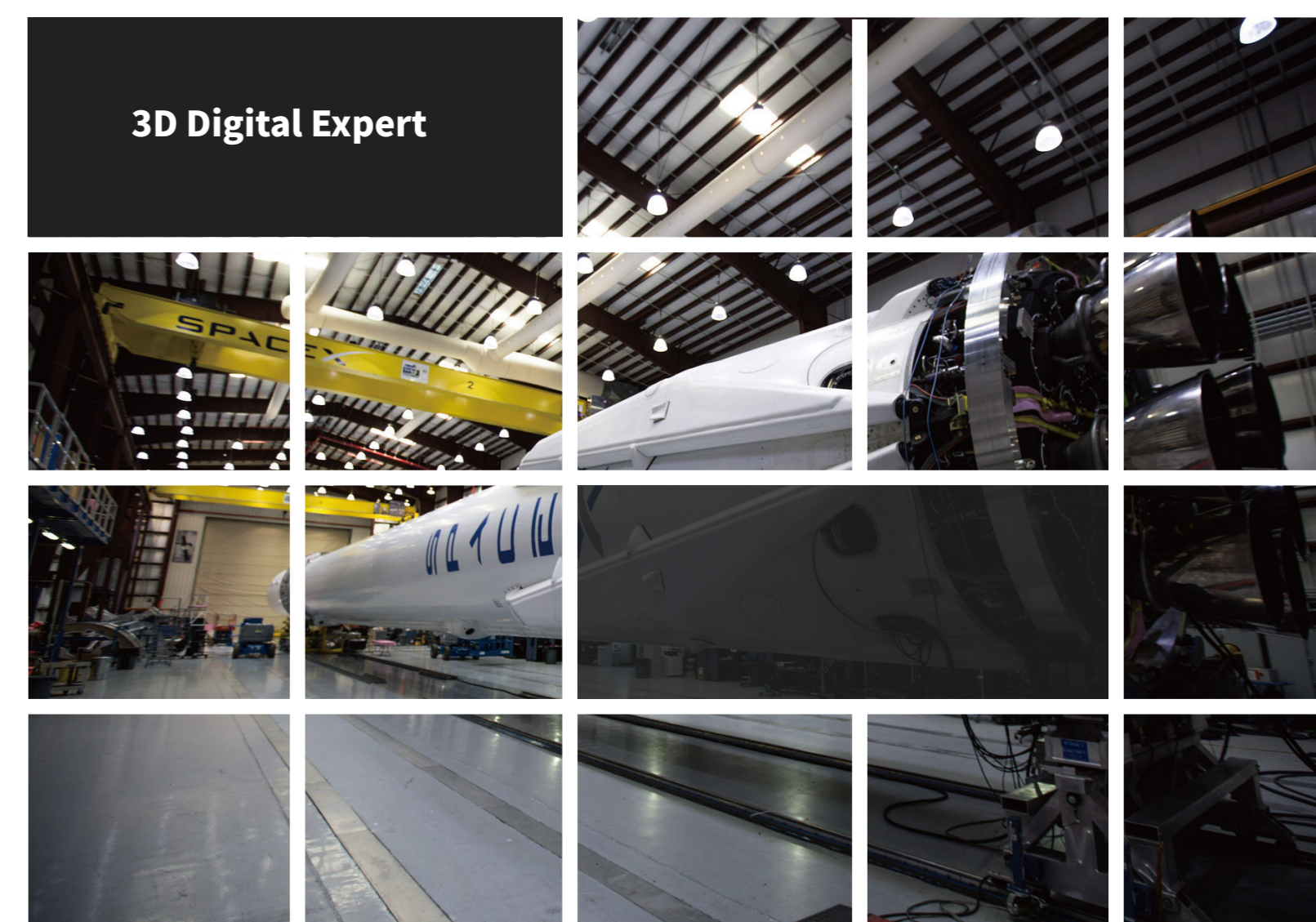
### 3D Inspection



### 3D Visualization



## 3D Digital Expert



## AXE 3D SCANNER

Find The Most Efficient 3D Measurement Solution



**SCANTECH (HANGZHOU) CO., LTD**  
 Building 12, No.998, West Wenyi Road, Yuhang District, Hangzhou,  
 Zhejiang Province, 310000 China  
 Tel: 0086-571-85852597 Fax: 0086-571-85370381  
 E-mail: info@3d-scantech.com  
 Website: www.3d-scantech.com

SCANTECH

Authorized Distributor

SCANTECH (HANGZHOU) CO., LTD



**AXE**

AXE combines the whole characteristics and functions of normal handheld 3D scanner. The biggest breakthrough is overturn the measurement way for large volume. AXE operates high accuracy scanning for large volume without extra device.

**High Precision**

- No need to work with global photogrammetry system
- Volumetric accuracy is up to 0.02mm+0.035 mm/m
- Accuracy far exceed normal hand-held scanner

**Fast Speed**

- Cut half quantity of sticker
- Double scan area
- 800,000 measurements/s

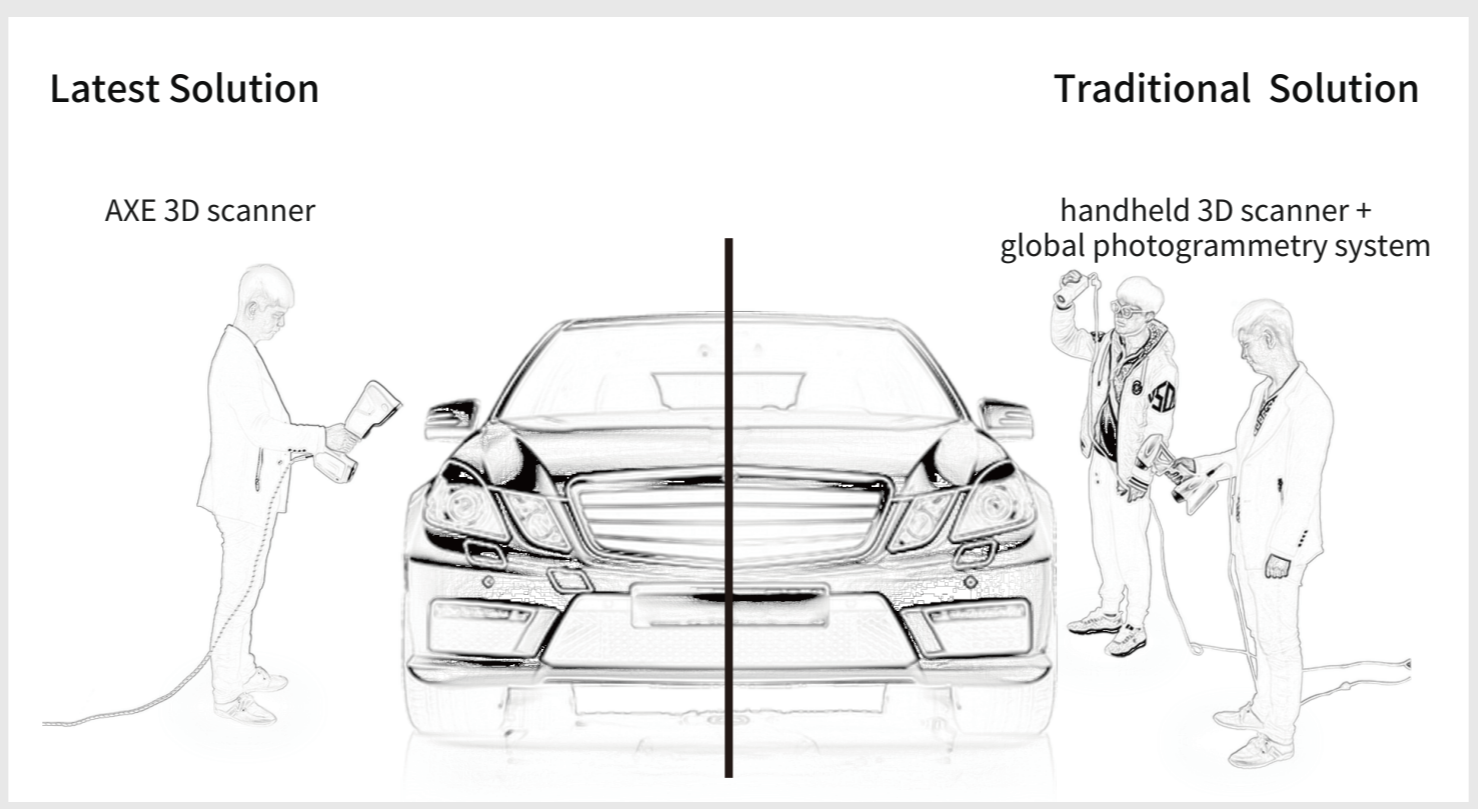
**Flexibility & Portability**

- Easy operation
- Handheld measurement
- Easy to perform 3D measurement individually for large volume

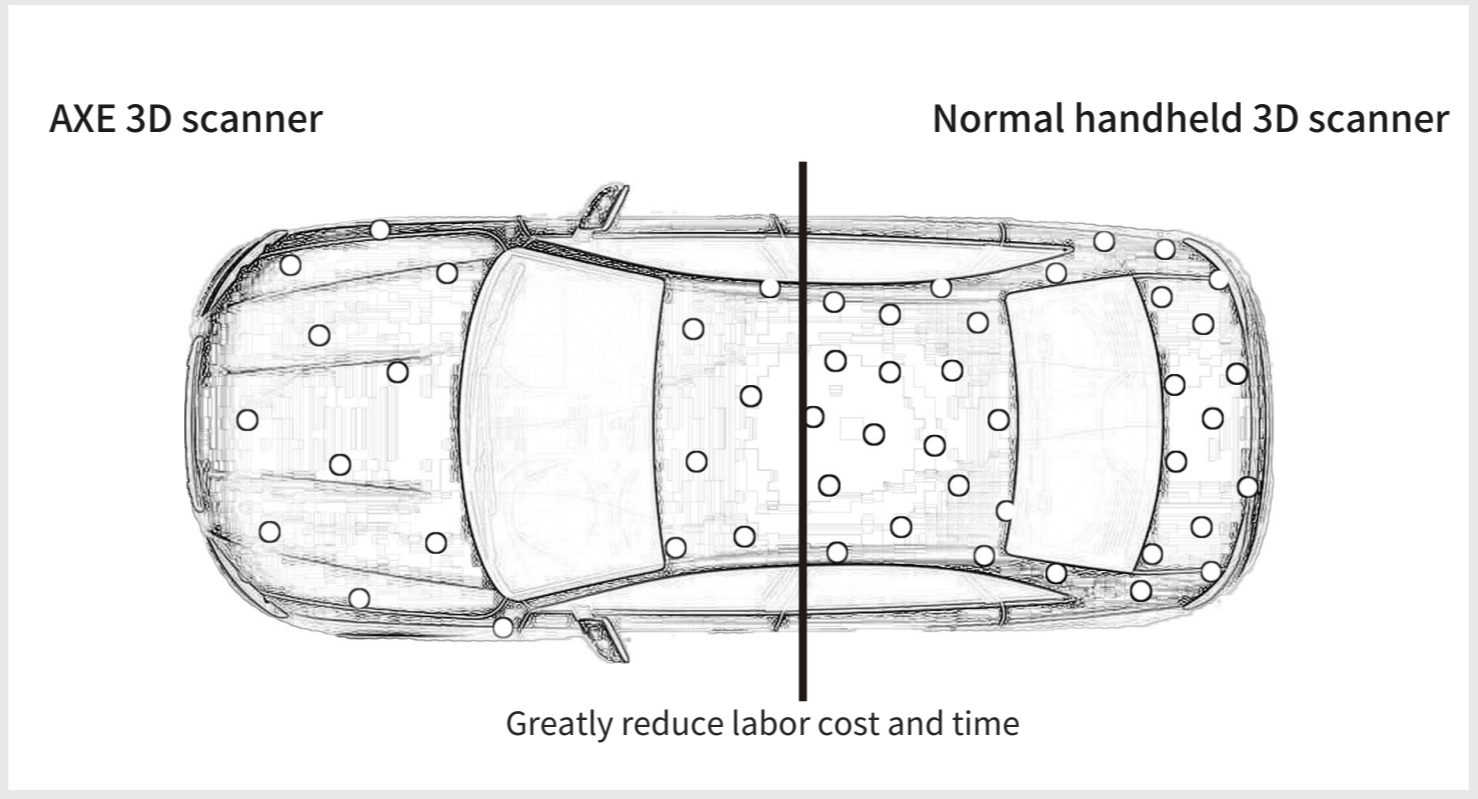
**Large Measurement Range**

- Double scan area
- Efficiently complete 3D reconstruction of large volume

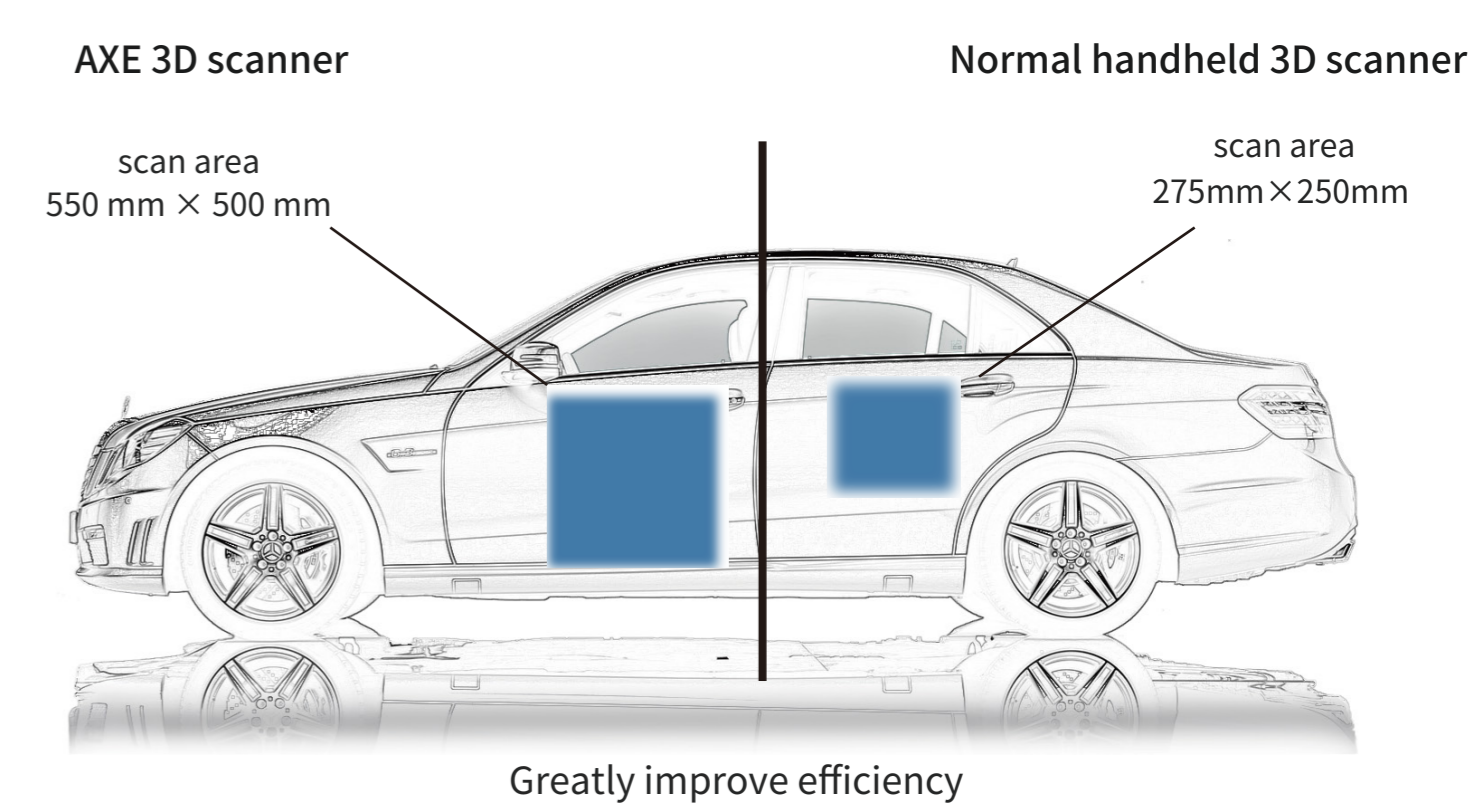
**Large Volume Measurement Solution Comparison**



**Cut Half Quantity Of Stickers**



**Double Scan View**



**Portability**

