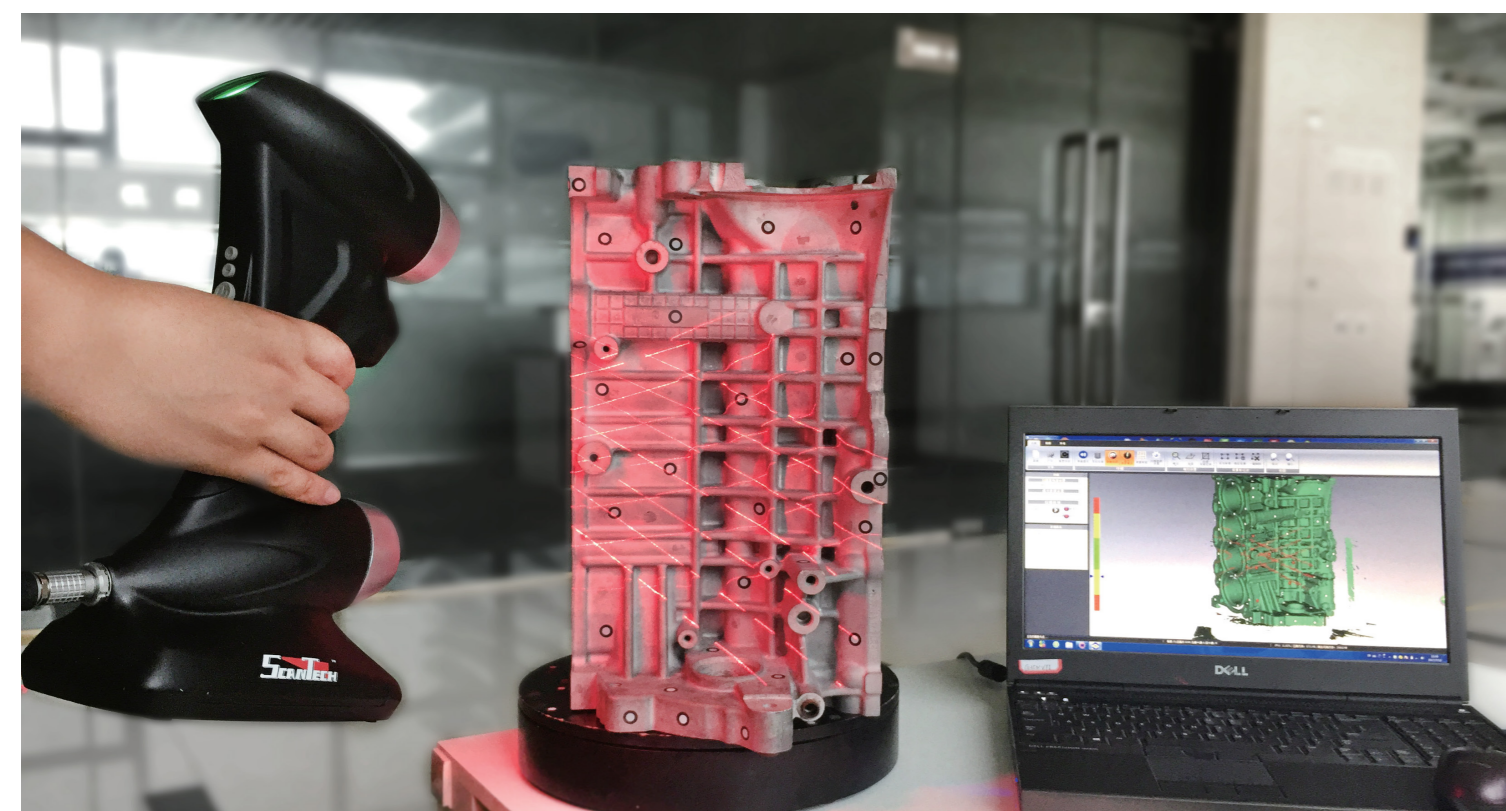


PRINCE Technical Parameter				
Type	PRINCE 335		PRINCE 775	
Scan mode	Standard mode R	Hyperfine mode B	Standard mode R	Hyperfine mode B
Laser source	3 red laser crosses (+ 1 extra red laser line)	5 blue parallel laser lines	7 red laser crosses (+ 1 extra red laser line)	5 blue parallel laser lines
Deep hole scanning	Support			
Hyperfine scanning	Support			
Accuracy <sup>(1)</sup>	0.030 mm			
Camera frame rate	60 fps	120 fps	60 fps	120 fps
Measurement rate	265,000 measurements/s	320,000 measurements/s	480,000 measurements/s	320,000 measurements/s
Scanning area	225 mm × 250 mm	200 mm × 200 mm	275 mm × 250 mm	200 mm × 200 mm
Laser class	CLASS II (eye-safe)			
Resolution	0.050 mm	0.020 mm	0.050 mm	0.020 mm
Volumetric accuracy <sup>(2)</sup> (without extra device)	0.020 mm + 0.080 mm/m	0.010 mm + 0.080 mm/m	0.020 mm + 0.060 mm/m	0.010 mm + 0.060 mm/m
Volumetric accuracy <sup>(2)</sup> (with MSCAN)	0.020 mm + 0.025 mm/m	0.010 mm + 0.025 mm/m	0.020 mm + 0.025 mm/m	0.010 mm + 0.025 mm/m
Stand-off distance	300 mm	150 mm	300 mm	150 mm
Depth of field	250 mm	100 mm	250 mm	100 mm
Output formats	.stl, .ply, .obj, .igs, wrl, .xyz, .dae, .fbx, .ma, .asc or customized			
Weight	0.95 kg			
Dimensions	315 × 165 × 105 mm			
Operating temperature range	-10 ~ 40°C			
Interface mode	Gigabit Lan			
Patents	CN204854633U, WO2017028600, CN105068384, WO2017020648, CN204854633U, CN105049664, CN204902785U, CN104501740, CN204944431U, WO2017024869, CN204963812U, CN106403845, WO2018049843, CN106500627, WO2018072434, CN106500628, WO2018072433, CN206132003U, US10309770B2			

(1) ISO 17025 accredited: Based on VDI/VDE 2634 Part 3 standard and JJF 1951 specification, probing error (size) (PS) performance is evaluated.  
(2) ISO 17025 accredited: Based on VDI/VDE 2634 Part 3 standard and JJF 1951 specification, sphere spacing error (SD) performance is evaluated.



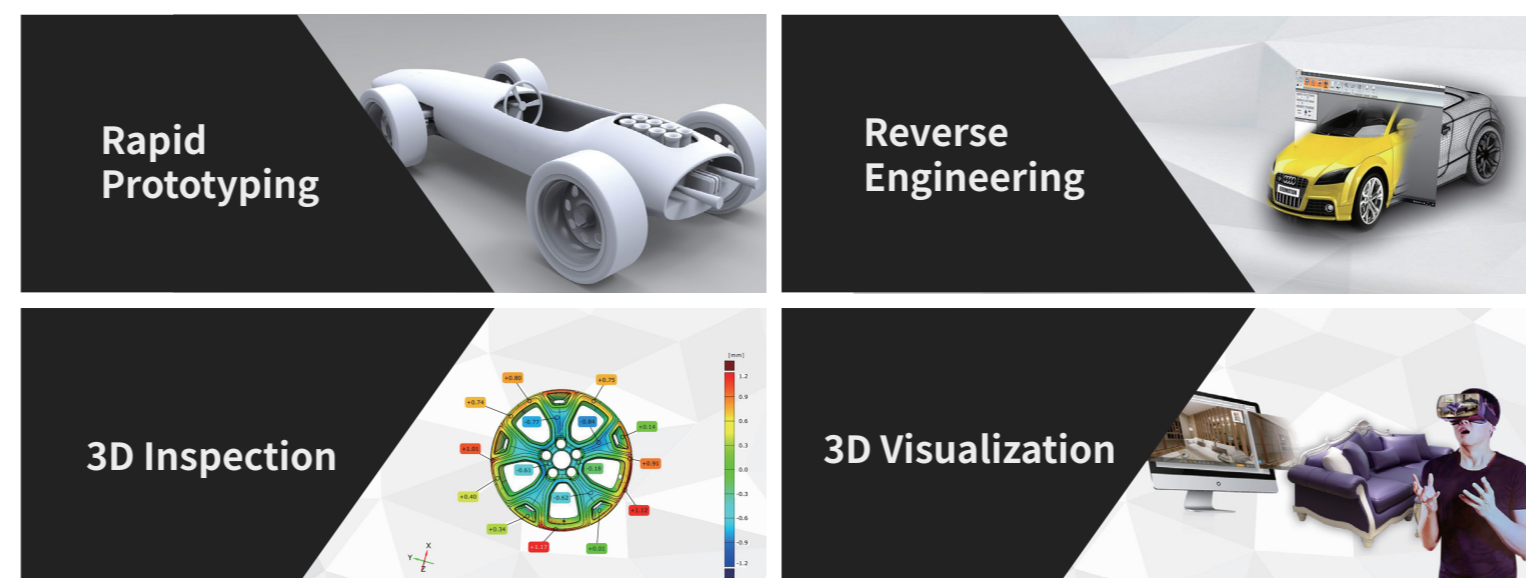
## Company Introduction

SCANTECH is one of the earliest high-tech companies starting to research and develop handheld 3D visual measurement devices across the world. Leveraging its profound technological prowess, SCANTECH has established strategic partnerships with a number of world-class companies and reached cooperation for joint R&D centers and co-development plans with multiple optical metrology companies in Europe. SCANTECH products are sold to more than 50 countries and regions, serving over 5000 enterprises. The presence of our distributors and international sales and technical support teams has been expanded all across the globe, providing industrial frontier 3D measurement solutions for prominent enterprises and research institutions like Boeing, NASA, COMAC, BMW, Volkswagen, GM, Apple, Huawei, Siemens, JCB and Sany.

SCANTECH has been gaining rapid growth ever since the establishment due to our continuous input in R&D and management, as well as the attraction of top-notch talents. R&D personnel account for 50% of the company staff, among them, the proportion of masters and doctors is as high as 80%. The talent pool enables us to develop a series of proprietary 3D digital measurement systems. Our product line stretches from metrology-grade online and offline equipment and consumer-grade color 3D scanners, which are widely applied in areas of aerospace, automotive/rail transport, mechanical manufacturing, medical care and rehabilitation, digital arts for TV and film, education and research, cultural heritage protection, 3D printing and VR/AR. SCANTECH helps companies fulfill optimized solutions to quality and efficiency and open up a vast territory for 3D digitalization.

### All-Round 3D Digital Solution

Scantech 3D measurement system offers professional measurement technology for variety industries.



## 3D Digital Expert



## PRINCE 3D Scanner

Born for Ultra-Detail



**SCANTECH (HANGZHOU) CO., LTD**  
Building 12, No.998, West Wenyi Road, Yuhang District, Hangzhou,  
Zhejiang Province, 310000 China  
Tel: 0086-571-85852597 Fax: 0086-571-85370381  
E-mail: info@3d-scantech.com  
Website: www.3d-scantech.com

SCANTECH

SCANTECH (HANGZHOU) CO., LTD

# Complete Solution For Industrial 3D Measurement

New generation of 3D measurement technology

## Blue Laser Scan Mode



### Dual Scan Mode

- Red & blue laser scan modes
- Rapidly switch two working modes
- Extreme high detail capturing
- Easy to scan large and small objects

### High Precision

- Metrology-grade accuracy up to 0.030 mm
- Accuracy is insensitive to instable environment

### High Efficiency

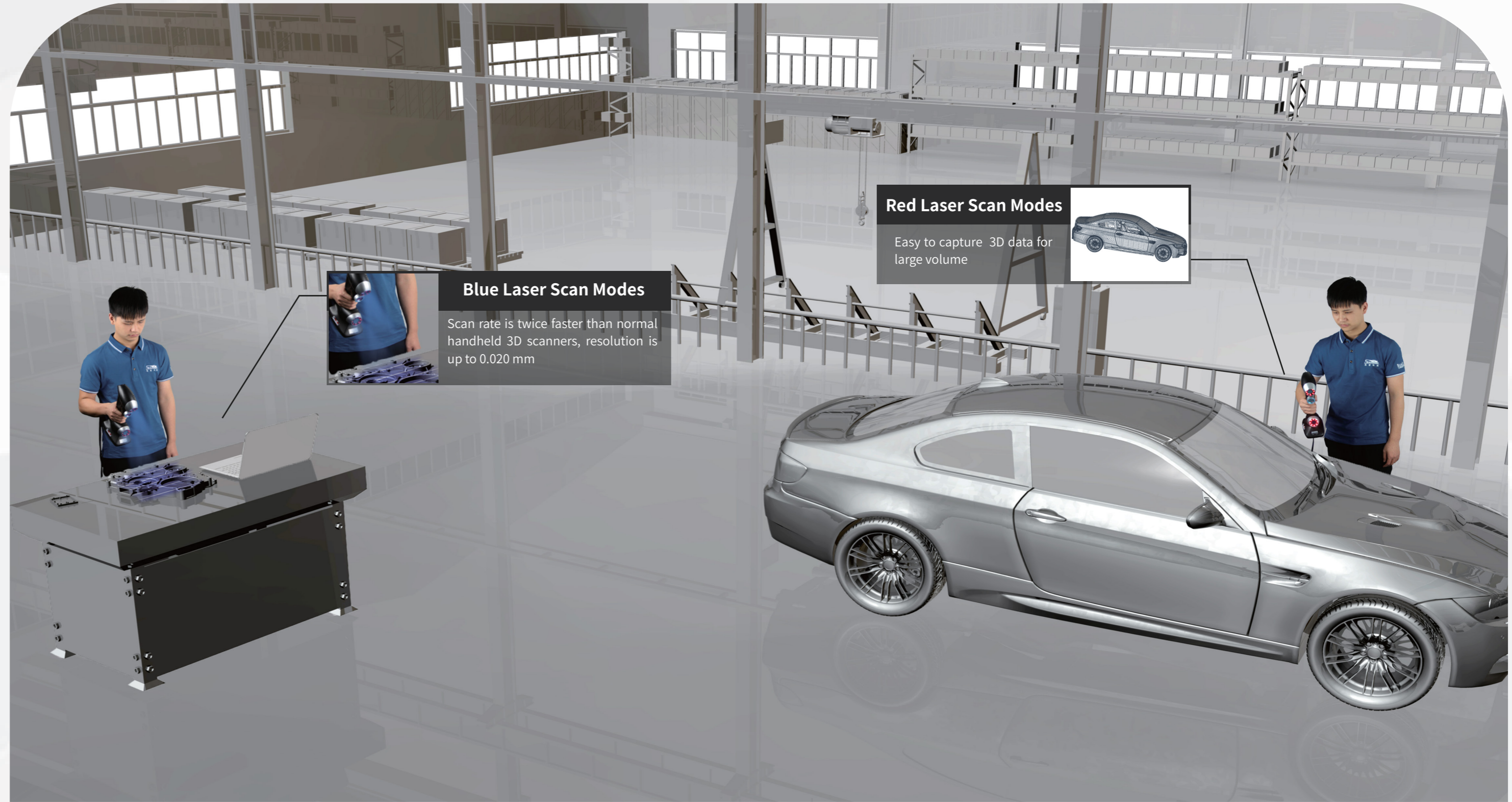
- 3 or 7 red laser crosses
- 5 blue parallel laser lines
- Scan deep hole by single red laser line
- 480,000 measurements/s

### Ultra-high Detail

- Resolution up to 0.020 mm
- Equip with 120 fps camera
- Easily scan object smaller than coins

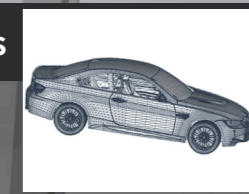
PRINCE

PRINCE 3D scanner with two different working modes. It makes full use of high adaptability of red laser and ultra-detail capture of blue laser, truly performing a perfect combination of easy operation and high detail.



## Red Laser Scan Modes

Easy to capture 3D data for large volume



## Blue Laser Scan Modes

Scan rate is twice faster than normal handheld 3D scanners, resolution is up to 0.020 mm

