



Industrial-grade Excellence, Next-generation Magic Tool

3DeVOK MT

Professional 3D Scanner

34 blue laser lines + 22 infrared laser lines + Large-area infrared speckle



Efficient

No Markers Needed

Marker-free 3D scanning is supported across three light source modes, ensuring easy operations. Its plug-and-play design further enhances on-site scanning efficiency.

Advanced Hybrid Alignment

With advanced alignment technologies for geometry, texture, and target, it ensures smooth alignment with minimal or no targets, whether scanning surfaces rich in geometry and feature or those with limited features, for effortless and intuitive operation.

Fast and Stable Scanning

Capture data at a rate of up to 4.5 million points/s with a high frame rate of 70 fps. Scanning area per frame covers up to 1100 mm*1000 mm, offering smooth and stable scans of medium to large objects.



Flexible

Multi-Size Scanning

It supports the scanning of objects ranging from 0.05 m to 5 m, making it perfect for all kinds of parts, medium to large items, art pieces, human body scans, and more.

Adaptable to Various Environments

Perform efficiently in indoor, outdoor, low-light, and even direct sunlight conditions, ensuring reliable results in any setting.

Handles Complex Materials

No powder is needed to scan challenging surfaces, including black and reflective objects, black hair, and multi-colored items.



Robust

Exceptional Resolution

Achieve a maximum resolution of 0.05 mm, accurately capturing complex textures and intricate details for objects over 5 cm.

High Precision

Accuracy reaches up to 0.04 mm+0.06 mm/m in marker-based alignment mode. Offers highly accurate and high-quality 3D data thanks to its real-time meshing algorithms.

Vivid Color Restoration

Support 24-bit high-definition color scanning, enhanced by high-resolution camera images and texture mapping, delivering true-to-life texture and color reproduction of objects.



Special Features

3 Types of Light Sources

34 blue laser lines | 22 infrared laser lines | Large-area infrared speckle

No-marker 3D Scanning

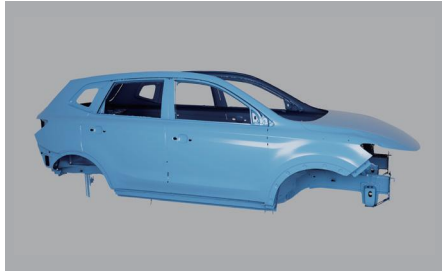
Large-scale Scanning

Invisible Light Scanning

Scanning area: 1100 mm*1000 mm | Scanning distance: 1500 mm



Versatile



| Car Modification



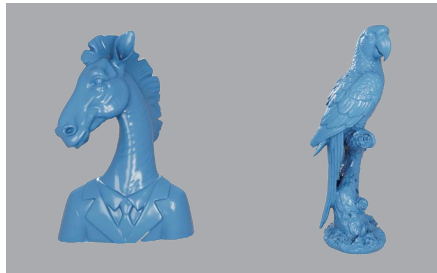
| Reverse Engineering



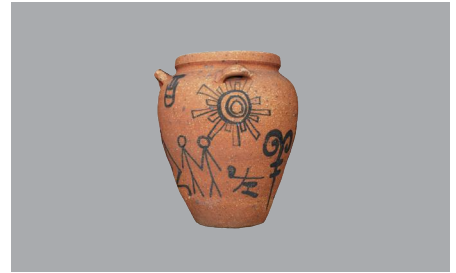
| Human Digitization



| 3D Display



| Artistic Design



| Cultural Heritage

| 3DeVOK MT Technical Parameter | | | |
|-----------------------------------|--|--|---|
| Light Source | 34 Blue Laser Lines | 22 Infrared Laser Lines | Infrared VCSEL Structured Light |
| Laser Class | Class II (Eye-safe) | | Class I (Eye-safe) |
| Scan Mode | Blue Laser Lines | Infrared Laser Lines | Infrared Linear-array Structured Light-Speckle |
| | Supports markerless scanning | Supports markerless and invisible-light scanning | Supports markerless, invisible scanning, partial fine scanning, and rapid scanning at ultra-long-distance range and ultra-large FoV |
| Basic Accuracy * | Up to 0.04 mm | | |
| Volumetric Accuracy * | Up to 0.04 mm + 0.06 mm/m | | |
| Point Distance | 0.05-5mm | 0.1-5mm | |
| Alignment Mode | Hybrid, marker, texture, and feature alignment | | Hybrid, texture, and feature alignment |
| Ability to Capture Texture | Yes | | |
| Scanning Distance | 150-1000mm | | 150-1500mm |
| Field of View | 140mm × 140mm - 490mm × 490mm | | 50mm × 75mm - 1100mm × 1000mm |
| Scanning Rate | Up to 3,300,000 Points/s | Up to 2,450,000 Points/s | Up to 4,500,000 Points/s |
| Output Formats | *.obj, *.stl, *.ply, *.asc, *.mk2, *.txt, *.epj, *.apj, *.spj, *.map, *.sk | | |
| Operating Conditions | 0-40°C, 10%-90% RH (non-condensing) | | |
| Interface | USB 3.0 | | |
| Scanner Dimensions & Weight | Dimensions: 215 mm × 73 mm × 53 mm; Weight: 620 g | | |
| Power Source | DC: 12 V, 5.0 A | | |
| Certifications | CE-EMC, FCC, RoHS, IEC 60825, IEC 62471, IEC 60529-IP50, WEEE, KC | | |
| Recommended Configurations for PC | OS: Win10/Win11, 64-bit; CPU: i7-13650HX and above; RAM: 32GB and above; Graphic Card: NVIDIA discrete graphics card, NVIDIA RTX3060 and above; Graphics Memory: 6GB and above | | |

* The laboratory theoretical accuracy test results are subject to uncertainty errors.



LinkedIn



Facebook



Youtube

SCANTECH (HANGZHOU) CO., LTD. (HQ) STAR Market Stock Code: 688583

3DeVOK, a brand under SCANTECH 3D, specializes in 3D digital applications beyond the industrial sector. Covering areas such as reverse engineering, cultural heritage, and medical fields, 3DeVOK empowers users to unlock the full potential of 3D tools, driving innovation and efficiency.

SCANTECH, a global leader in 3D vision digital solutions, focuses on industrial 3D inspection applications. With high-precision, portable, and intelligent products SCANTECH serves industries such as aerospace, automotive manufacturing, and engineering machinery.