

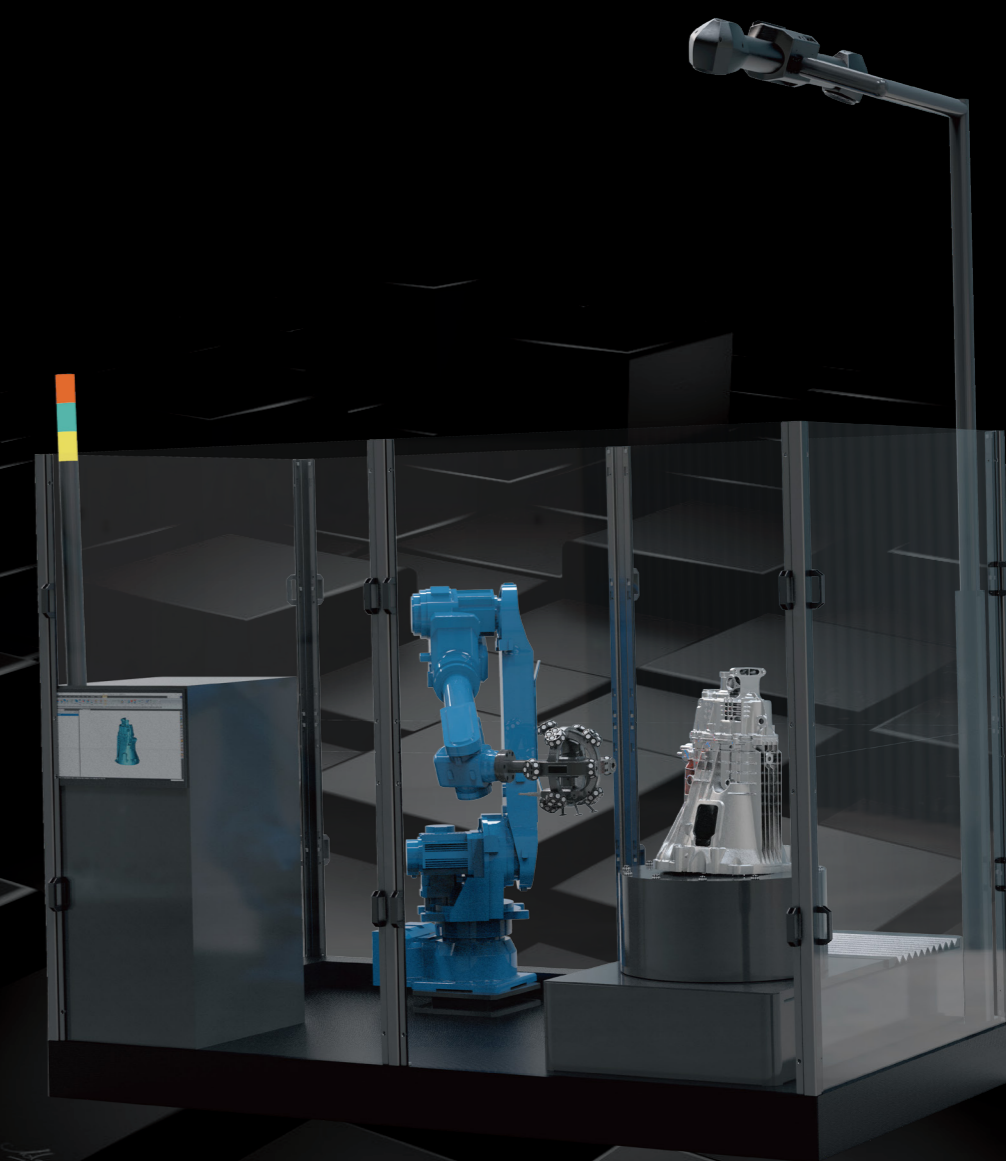
## Technical Parameter

Type	AutoScan-T42	
Scan mode	Ultra-fast scanning	17 blue laser crosses
	Hyperfine scanning	7 blue parallel laser lines
	Deep hole scanning	1 extra blue laser line
Laser lines in total	42	
Accuracy	0.025 mm	
Measurement rate up to	1,900,000 measurements/s	
Scanning area	310 mm × 350 mm	
Laser class	CLASS II (eye-safe)	
Resolution	0.020 mm	
Volumetric accuracy	10.4 m <sup>3</sup>	0.064 mm
	18.0 m <sup>3</sup>	0.078 mm
Volumetric accuracy <small>(With MSCAN-L15 photogrammetry system)</small>	0.044 mm + 0.015 mm/m	
Stand-off distance	300 mm	
Depth of field	320 mm	
Output formats	.stl, .ply, .obj, .igs, wrl, .xyz, .dae, .fbx, .ma, .asc or customized	
Operating temperature range	-10°C ~ 40°C	
Interface mode	USB 3.0	
Patents	CN204329903U, CN104501740B, CN104165600B, CN204988183U, CN204854633U, CN204944431U, CN204902788U, CN105068384B, CN105049664B, CN204902784U, CN204963812U, CN204902785U, CN204902790U, CN106403845B, CN209197685U, CN209263911U, CN106500627B, CN106500628B, CN206132003U, CN211121096U, US10309770B2, KR102096806B1	

**SCANTECH™**

**AUTOSCAN – T 3D System**

**Optical Automated  
Inspection for Intelligent Production Lines**



**SCANTECH (HANGZHOU) CO., LTD**  
 Building 12, No.998, Wenyi West Road, Yuhang District, Hangzhou,  
 Zhejiang Province, China  
 Tel: 0086-571-85852597 Fax: 0086-571-85370381  
 E-mail : info@3d-scantech.com  
 Website : www.3d-scantech.com

**SCANTECH™**

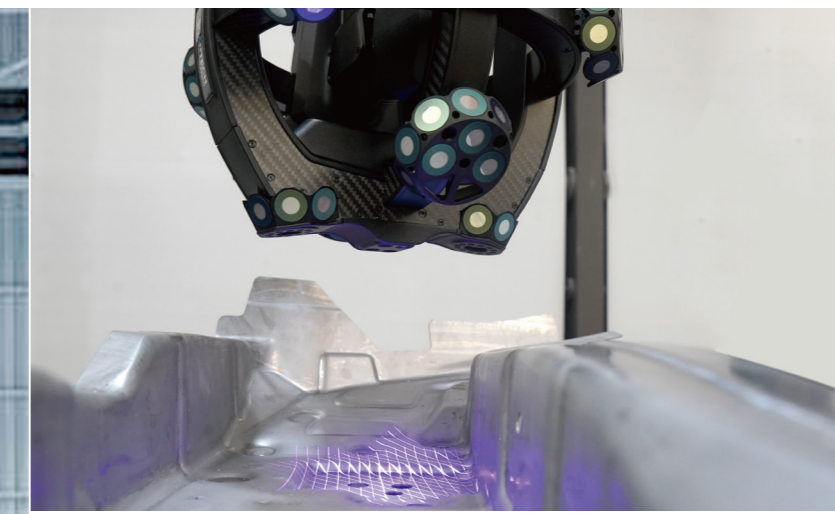
Copyright ©

**SCANTECH (HANGZHOU) CO., LTD**

# AUTOSCAN-T

AutoScan-T42 automated 3D system is a new upgrade for intelligent automatic inspection. It is specially designed for automated quality control in shop-floor conditions, facilitating enterprises to achieve the optimum matching between cost and efficiency.

AutoScan-T42 conducts non-destructive scanning without attaching markers. Its seamless connection with production line greatly contributes to the reduction the workload. The military-grade manufacturing quality presents strong anti-interference and high adaptation to complex and harsh workshop environment. It can be extensively used in national defense, energy, 5G, mold manufacturing, etc., users can easily operate the system owing to one-click start, offline programming, and compatibility with 3D software.

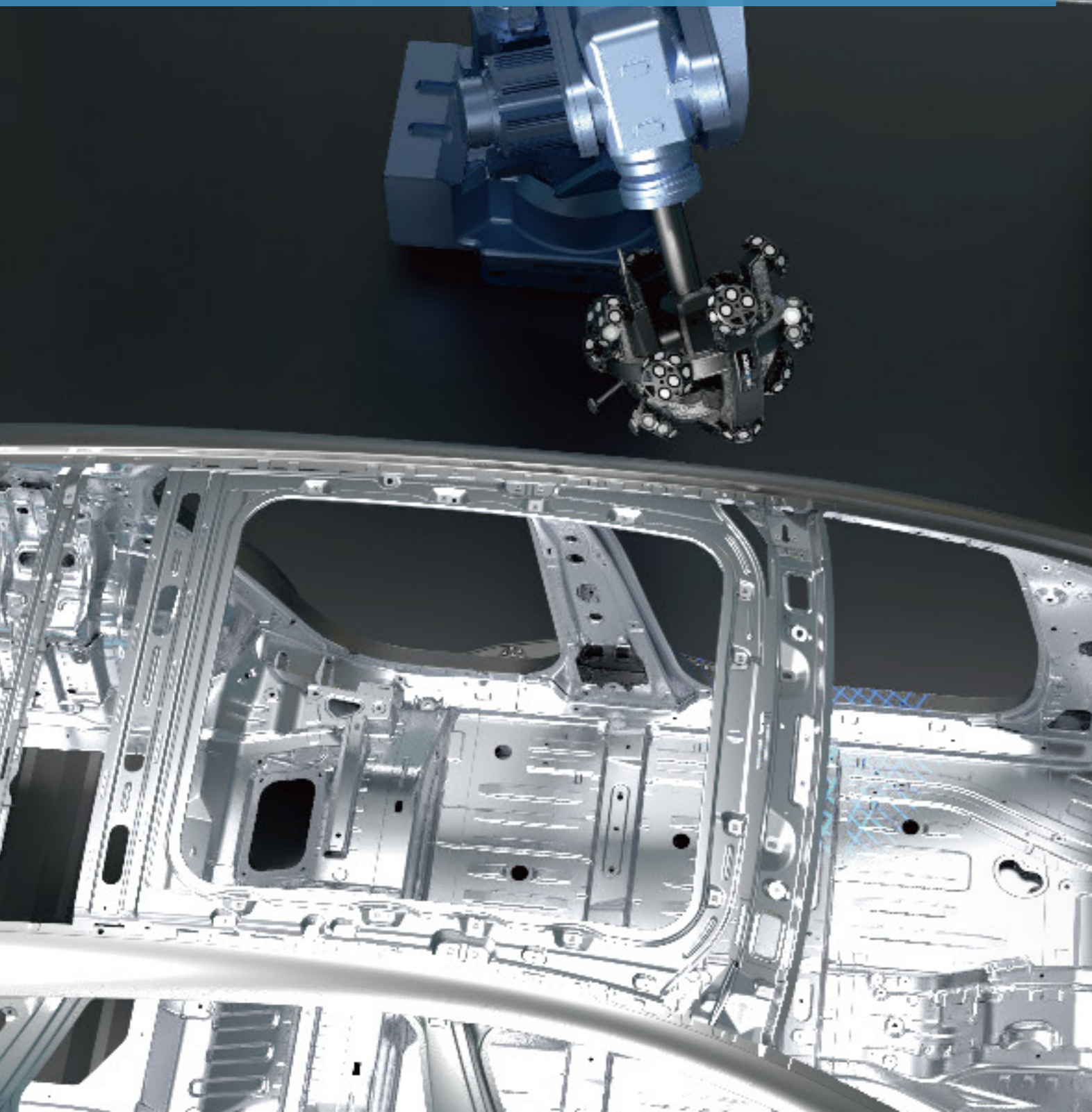
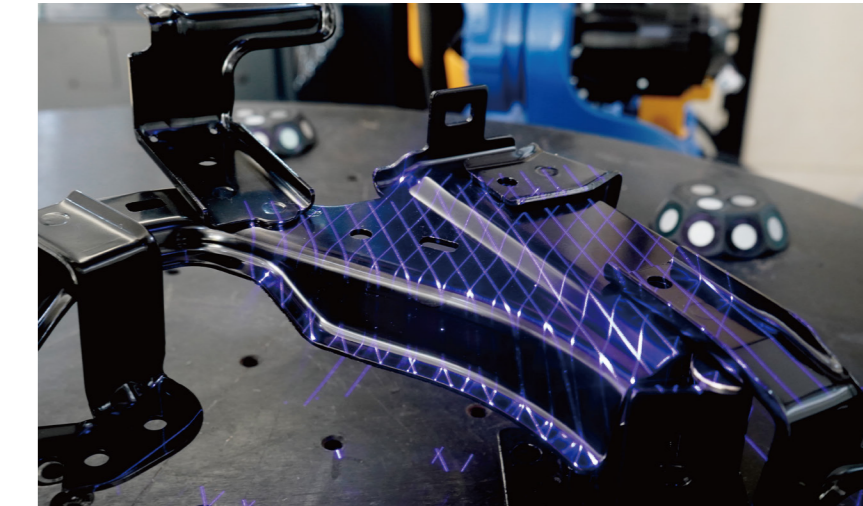


## Multiple Configurations

Conjunction with handheld 3D scanner, portable CMM, MSCAN photogrammetry system, rotary platforms, and guide rails, realize simultaneous optical tracking and scanning and personalized solutions.

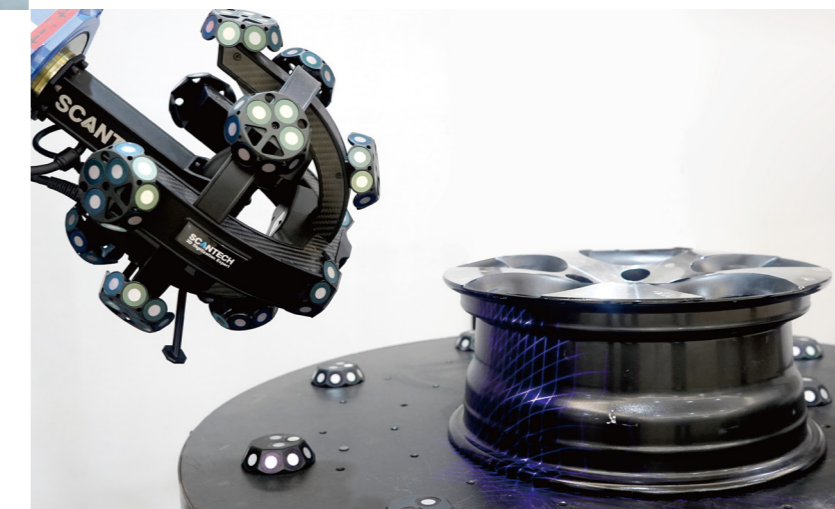
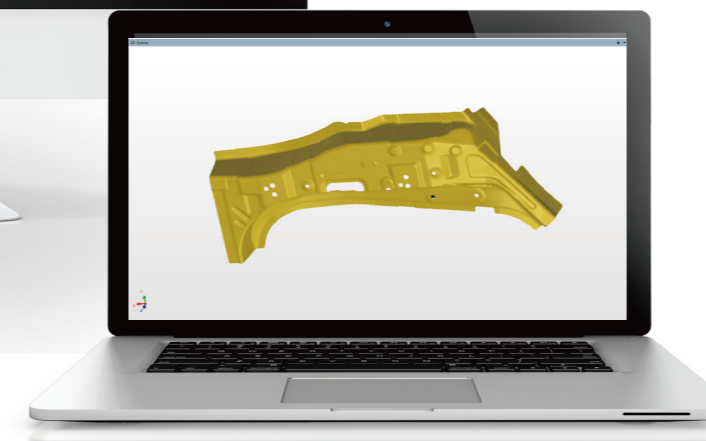
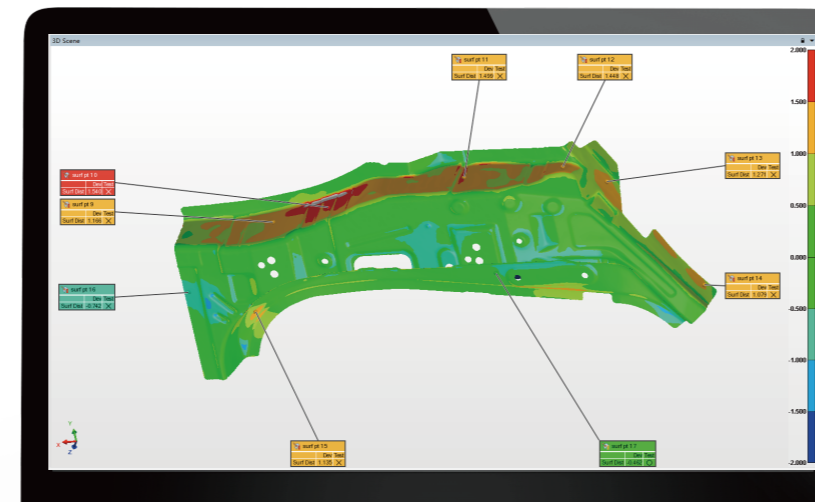
## Speed up Precise Inspection

With adoptions of blue laser and synchronous tracking technologies, it reaches up to 1,900,000 measurements/s and accuracy of 0.025 mm. Efficient and flexible automated manufacturing can be achieved without being affected by external factors.



## Work Seamlessly with Production Line

Based on automatic optical tracking and seamlessly integrated into production line, it is designed for online batch inspection and enhances iterative efficiency of the production process greatly.



## Military-grade Quality

Being unsusceptible to temperature, vibration, dust, etc., the military-grade design presents superior adaptability in harsh industrial environment.

## Simple Operation

Due to one-click start, offline programming and automatically generating inspection, it enables simple operation for users, regardless of their experience, to easily finish the measurement.

