



STAR Market
Stock Code: 688583.SH



Follow us on



LinkedIn



YouTube



Facebook



Instagram



X

SCANTECH (HANGZHOU) CO., LTD. (HQ)

- ☎ 0086 571-85852597 ✉ info@3d-scantech.com
- ☎ 0086 571-85370381 🌐 www.3d-scantech.com
- 📍 Building 12, No.998, West Wenyi Road, Yuhang District, Hangzhou, Zhejiang, China

SCANTECH DIGITAL Inc.

- ✉ info@3d-scantech.com
- 📍 15375 Barranca Parkway, Suite B-103, Irvine, CA 92618

SCANTECH DIGITAL GmbH.

- ☎ +49 (0) 711 3101390 1 ✉ europe@3d-scantech.com
- 📍 Dieselstrasse 18, 70771 Leinfelden-Echterdingen, Echterdingen industrial park

Korean Office

- ☎ 82 10 3548 2131
- ✉ kevin.park@3d-scantech.com

Indian Office

- ☎ +91 98995 70628
- ✉ arshad.jamal@3d-scantech.com

Brazil

- ☎ +55-11981521697
- ✉ gerson.souza@3d-scantech.com

Intelligent and Wireless Large-area 3D Scanner

KSCAN-X

Boundless Vision, Unmatched Accuracy

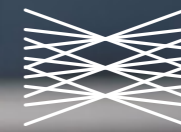


Powered by SCANTECH's advanced wireless technology and adaptive photogrammetry, the KSCAN-X is an intelligent, wireless large-area 3D scanner that sets a new standard for large-scale 3D measurements.

Featuring wireless operation, ultra-wide scanning area, extended depth of field, and fast scanning, the KSCAN-X offers smooth and high-precision 3D measurements for ultra-large and large to medium-sized parts across industries such as aerospace, heavy industry, and rail transportation. Designed to boost efficiency and deliver accurate quality control, the KSCAN-X is the ultimate solution for advanced manufacturing.



Ultra-large scanning area
extended depth of field



High-speed quad-cross
blue laser scanning



More flexibility in scanning objects
ranging from ultra-large to medium



Deep hole measurement



Adaptive photogrammetry



Fully wireless measurement

Wide-Area Scanning Exceptional Precision

Ultra-large Scanning Area

KSCAN-X, powered by our in-house developed and sophisticated algorithms, offers extensive scanning area of up to 2.6m*1.8m, which is ideal for scanning ultra-large parts.

Ultra-large Depth of field

With a large depth of field ranging from 0.3-2.5m, KSCAN-X ensures precise measurements for everything from medium to ultra-large parts with exceptional quality. Its flexible working distance makes scanning various-sized parts easier and more efficient.



0.3m

2.5m

2.6m

1.8m

Truly Wireless Scanning

It operates completely wire-free, enabling seamless scanning even in power-limited environments, at heights, or in remote locations. Experience true wireless freedom in 3D measurement.



Robust on-board processing module
Handle large amounts of data efficiently



Dual-battery system
Ensures no-cable and continuous operations



Dual-WNIC design technology
Guarantees wireless, stable, and high-speed data transfer

Faster, and Smoother

Powered by innovative quad-cross blue laser technology and a high-frame-rate processing chip, KSCAN-X delivers a major leap in measurement efficiency. It delivers fast and precise measurements for large parts even in harsh environments.

4*21
Quad-cross blue laser lines

6,450,000 measurements/s
Scanning rate up to

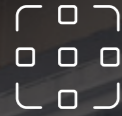
180fps
High frame rate

Fewer markers
Smoother and more efficient scanning



Versatile Applications

Ultra-large Parts | High Efficiency



Large-area scanning

With 4*21 blue laser lines, KSCAN-X enables highly efficient large-area scanning, capturing extensive surfaces in a single scan. It achieves exceptional accuracy of up to 0.075 mm, with volumetric accuracy reaching 0.075 mm + 0.010 mm/m.



Adaptive photogrammetry

With an advanced adaptive photogrammetry system, KSCAN-X ensures exceptional accuracy over long distances. It eliminates cumulative errors and ensures consistent volumetric accuracy, delivering high-precision results for both large-scale and detailed measurements, even in challenging environments.



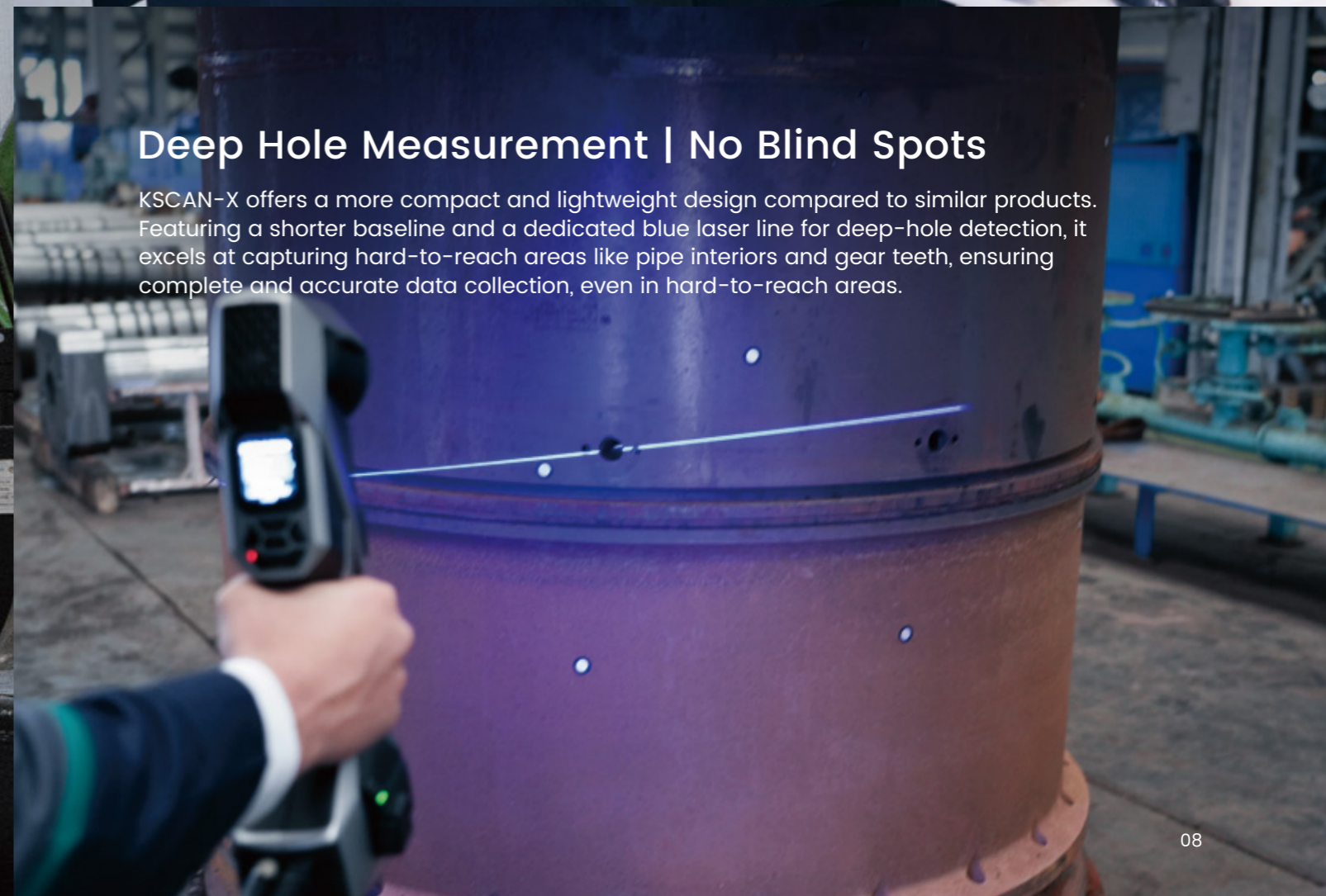
Medium to Large-sized Parts | Capture Fine Details

KSCAN-X's medium-distance scanning mode, with 27 blue laser crosses, is designed for scanning parts ranging from 0.5 m to 2 m. It captures intricate details with up to 0.030 mm accuracy, ensuring precise quality inspection of medium to large-sized parts, even with complex curves or fine features.



Deep Hole Measurement | No Blind Spots

KSCAN-X offers a more compact and lightweight design compared to similar products. Featuring a shorter baseline and a dedicated blue laser line for deep-hole detection, it excels at capturing hard-to-reach areas like pipe interiors and gear teeth, ensuring complete and accurate data collection, even in hard-to-reach areas.



Power and Comfort in One Design



Portable & Easy to Use

Step 1

Compact & Ready to Go

Lightweight design with a portable protective case—easy to carry and set up. An optional multi-functional case keeps all accessories organized.



Step 2

Wireless Connection

No cables, no hassle—just power on and start scanning anywhere.



Step 3

Fast Calibration

Quick 20-s calibration saves time and streamlines on-site work.



Step 4

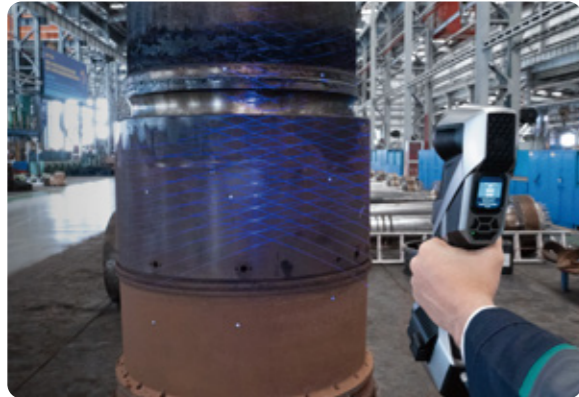
Smart Controls Effortless Operation

One-touch smart buttons handle complex functions without a computer.



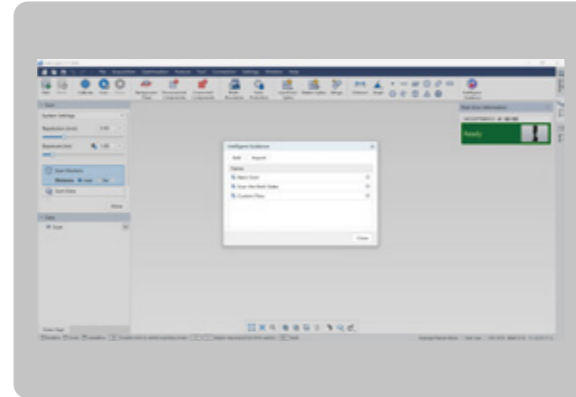
Touchscreen Interface

Built-in full-color touchscreen for real-time hardware and software status updates.



Smart Guidance

User-friendly software with customizable prompts for quick on-board and lower training costs.



Supports real-time monitoring

Comes with a standard mobile phone holder for on-the-go and real-time scanning data viewing.



Customizable buttons



All-in-One Metrology Software

Powered by the next-gen DefiniSight platform, KSCAN-X is built for industrial-grade 3D scanning and inspection, offering an intuitive interface, broad compatibility, and high-speed data processing for an enhanced metrology experience.

01

Easy to Use

Smart, streamlined workflows for effortless operation.

02

For Everyone

Designed for both beginners and experts.

03

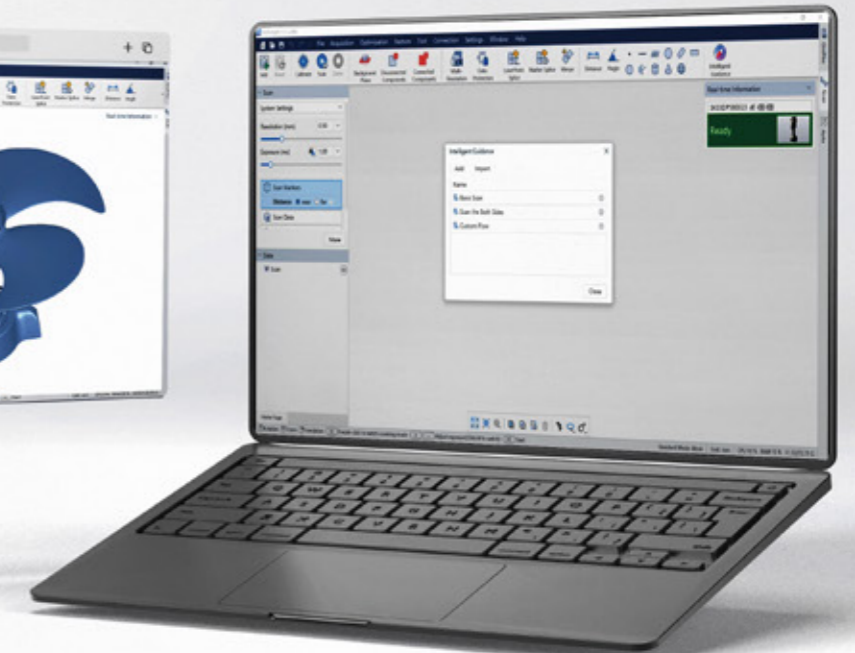
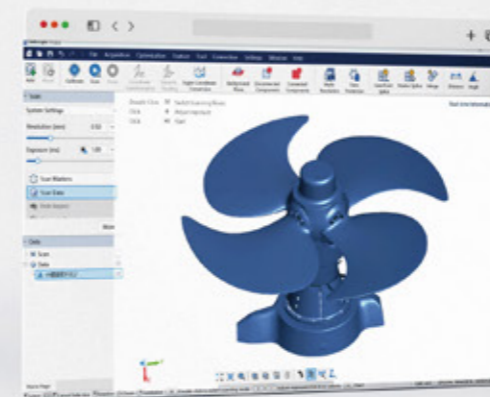
Seamless Scanning

Instant startup with real-time data capture and packaging.

04

High-Resolution Detail

Supports real-time mesh visualization for faster data capture and finer data quality.



KSCAN-X Technical specifications

Scan mode	Large area scanning	84 blue laser lines
	Medium-distance scanning	54 blue laser lines
	Deep hole scanning	1 extra blue laser line
	Photogrammetry	Adaptive photogrammetry
Accuracy (1)	Medium-distance scanning	0.030 mm
	Large area scanning	0.075 mm
Volumetric accuracy (1)(2)		0.075 mm + 0.010 mm/m
Scanning rate up to		6,450,000 measurements/s
Scanning area up to		2600 mm × 1800 mm
Working distance		0.30 m ~ 2.50 m
Object size		0.5 m ~ 15 m
Laser class		ClassII (eye-safe)
Resolution up to		0.1 mm
Dimension		344 mm × 124 mm × 99 mm
Stand-off distance		235 mm
Connection	Interface mode	USB3.0 Type-B
	Wireless standard	Wi-Fi 6, 802.11a/b/g/n/ac
	Wireless connection	Support Dual WNIC
	Intelligent and wireless mode	Support
	Uninterrupted power supply	Support
Environment Adaptability	Operating environment	Fanless, suitable for workshop environments
	Operating temperature range	-10°C ~ 40°C
	Operating humidity	10% ~ 90% RH
	Protection rating	IP50
Patent	CN204329903U, CN104501740B, CN104165600B, CN204988183U, CN204854633U, CN204944431U, CN204902788U, CN105068384B, CN105049664B, CN204902784U, CN204963812U, CN204902785U, CN204902790U, CN106403845B, CN209197685U, CN209263911U, CN106500627B, CN106500628B, CN206132003U, CN206905709U, CN107202554B, CN209310754U, CN209485295U, CN209485271U, CN305446920S, CN209991946U, US10309770B2, KR102096806B1, KR102209255B1, US10914576B2, CN113470180B, CN113218417B, CN113063370B, CN218411073U, CN113310427B, CN113074659B, CN218772495U, CN113473034B, CN115830249B, CN219829786U, CN116206069B	

(1) ISO 17025 accredited: Performance is evaluated based on JJF1951 specification, VDI/VDE 2634 Part 3 standard.

(2) Paired with 800-mm high-precision scale bar.

*Our company reserves the right to interpret and modify the parameters and images in this manual within the scope of law.

